

# Autoimmune Basis for Postural Tachycardia Syndrome

Hongliang Li, MD, PhD; Xichun Yu, MD; Campbell Liles, BS; Muneer Khan, MD; Megan Vanderlinde-Wood, MD; Allison Galloway, MD; Caitlin Zillner, BS; Alexandria Benbrook, BS; Sean Reim, BS; Daniel Collier, BS; Michael A. Hill, PhD; Satish R. Raj, MD; Luis E. Okamoto, MD; Madeleine W. Cunningham, PhD; Christopher E. Aston, PhD; David C. Kem, MD

**Background**—Patients with postural tachycardia syndrome (POTS) have exaggerated orthostatic tachycardia often following a viral illness, suggesting autoimmunity may play a pathophysiological role in POTS. We tested the hypothesis that they harbor functional autoantibodies to adrenergic receptors (AR).

**Methods and Results**—Fourteen POTS patients (7 each from 2 institutions) and 10 healthy subjects were examined for  $\alpha$ 1AR autoantibody-mediated contractility using a perfused rat cremaster arteriole assay. A receptor-transfected cell-based assay was used to detect the presence of  $\beta$ 1AR and  $\beta$ 2AR autoantibodies. Data were normalized and expressed as a percentage of baseline. The sera of all 14 POTS patients demonstrated significant arteriolar contractile activity ( $69 \pm 3\%$  compared to  $91 \pm 1\%$  of baseline for healthy controls,  $P < 0.001$ ) when coexisting  $\beta$ 2AR dilative activity was blocked; and this was suppressed by  $\alpha$ 1AR blockade with prazosin. POTS sera acted as a partial  $\alpha$ 1AR antagonist significantly shifting phenylephrine contractility curves to the right. All POTS sera increased  $\beta$ 1AR activation ( $130 \pm 3\%$  of baseline,  $P < 0.01$ ) and a subset had increased  $\beta$ 2AR activity versus healthy subjects. POTS sera shifted isoproterenol cAMP response curves to the left, consistent with enhanced  $\beta$ 1AR and  $\beta$ 2AR agonist activity. Autoantibody-positive POTS sera demonstrated specific binding to  $\beta$ 1AR,  $\beta$ 2AR, and  $\alpha$ 1AR in transfected cells.

**Conclusions**—POTS patients have elevated  $\alpha$ 1AR autoantibodies exerting a partial peripheral antagonist effect resulting in a compensatory sympathoneural activation of  $\alpha$ 1AR for vasoconstriction and concurrent  $\beta$ AR-mediated tachycardia. Coexisting  $\beta$ 1AR and  $\beta$ 2AR agonistic autoantibodies facilitate this tachycardia. These findings may explain the increased standing plasma norepinephrine and excessive tachycardia observed in many POTS patients. (*J Am Heart Assoc.* 2014;3:e000755 doi: 10.1161/JAHA.113.000755)

**Key Words:** adrenergic receptor • autoantibody • autonomic function • postural tachycardia syndrome

Postural tachycardia syndrome (POTS) occurs most commonly in young women of child-bearing age, less frequently in males or at older ages,<sup>1–4</sup> and affects 500 000

in the United States alone.<sup>5</sup> The characteristic hemodynamic finding is an excessive increase in standing heart rate.<sup>6,7</sup> In contrast to patients with orthostatic hypotension, blood pressure may rise with upright posture. This suggests an overshoot of the normal arterial compensatory vasoconstriction associated with orthostasis. Plasma norepinephrine levels are often elevated in recumbency and rise significantly with upright posture.<sup>8–10</sup> The etiology of POTS is unknown although several pathophysiological mechanisms have been proposed.<sup>6</sup> Some subjects report a “viral-like” illness 2 to 6 months prior to the onset of symptoms, thus supporting the hypothesis that an autoimmune-mediated molecular mimicry might be present. Interest generally has focused on the abnormal circulating catecholamines and abnormal cardiovascular conditioning. Current therapeutic approaches using  $\beta$ -blockade<sup>11</sup> can lead to partial alleviation of the tachycardia but are frequently associated with additional side effects.

We previously reported that patients with “idiopathic” orthostatic hypotension (OH) have a strong association with activating autoantibodies to several autonomic G-protein coupled receptors (GPCR) including the  $\beta$ 1- and  $\beta$ 2-adrenergic receptors ( $\beta$ 1AR and  $\beta$ 2AR) and M2 and M3 muscarinic

From the Endocrinology and Harold Hamm Diabetes Center (H.L., X.Y., C.L., M.K., M.V., A.G., C.Z., A.B., S.R., D.C., D.C.K.) and Heart Rhythm Institute (H.L., X.Y., D.C.K.), University of Oklahoma Health Sciences Center & Veterans Affairs Medical Center, Oklahoma City, OK; Departments of Microbiology and Immunology (M.W.C.) and Pediatrics (C.E.A.), University of Oklahoma Health Sciences Center, Oklahoma City, OK; Department of Medical Pharmacology and Physiology, Dalton Cardiovascular Research Center (M.A.H.), University of Missouri, Columbia, MO; and Division of Clinical Pharmacology, Departments of Medicine (S.R.R., L.E.O.) and Pharmacology (S.R.R.), Vanderbilt University, Nashville, TN.

Presented in part at the 24th International Symposium on the Autonomic Nervous System, October 2013, Kohala, Hawaii, and at the Annual Scientific Sessions of the American Heart Association, November 2013, Dallas, TX.

**Correspondence to:** David C. Kem, MD, Heart Rhythm Institute, University of Oklahoma Health Sciences Center, TCH 6E103, 1200 Everett Dr, Oklahoma City, OK 73104. E-mail: david-kem@ouhsc.edu

Received December 20, 2013; accepted January 9, 2014.

© 2014 The Authors. Published on behalf of the American Heart Association, Inc., by Wiley Blackwell. This is an open access article under the terms of the Creative Commons Attribution-NonCommercial License, which permits use, distribution and reproduction in any medium, provided the original work is properly cited and is not used for commercial purposes.

receptors (M2R and M3R).<sup>12,13</sup> These autoantibodies primarily target the second extracellular loop (ECL2) of the respective receptors and mediate physiologic effects.<sup>14,15</sup> Subjects with marked idiopathic OH predominantly harbor the vasodilatory  $\beta$ 2AR and M3R autoantibodies, while the co-presence of M2R and/or  $\beta$ 1AR autoantibodies respectively appear to decrease or increase the heart rate. These autoantibodies appear to act alone as allosteric agonists yet also possess partial antagonist capability.<sup>16</sup>

We hypothesized subjects with POTS manifest autoantibodies to the pressor  $\alpha$ 1-adrenergic receptor ( $\alpha$ 1AR) and could partially block the effectiveness of the normal  $\alpha$ 1AR endogenous ligand norepinephrine central to the homeostatic response to upright posture. This impaired vasoconstrictor response would increase baroreceptor activation, increase central sympathetic nervous activity, and normalize vasoconstriction and blood pressure. The relatively unprotected  $\beta$ 1AR cardiac chronotropic receptors would respond to this increased sympathoneural output and circulating norepinephrine with an exaggerated tachycardia. The presence of  $\beta$ 1/2AR-activating autoantibodies potentially would enhance this tachycardia.

## Methods

### Patient Selection

The present study was performed in 2 phases. In Phase I, 7 POTS patients and 8 healthy subjects were recruited for study at the Oklahoma University (OU) Health Science Center and Oklahoma City Veteran's Affairs Medical Center. In this group, we tested our hypothesis for the presence of autoantibodies to the  $\alpha$ 1AR. In Phase II, we retested our hypothesis using blinded serum samples from 7 POTS patients and an additional 2 healthy subjects studied at the Vanderbilt University (VU) Autonomic Dysfunction Center (Nashville, TN). These protocols were approved by the Biomedical Ethics Committees at the Oklahoma University Health Science Center and the Human Research Protection Program at the Vanderbilt University Medical Center, and each subject gave signed, informed consent.

Patients met criteria for POTS<sup>17–19</sup> developing symptoms of orthostatic intolerance accompanied by an increased heart rate rise  $\geq 30$  min<sup>-1</sup> within 10 minutes of standing in the absence of significant hypotension (a fall in blood pressure [BP] of  $>20/10$  mm Hg). All patients had a  $\geq 6$  month history of symptoms, the absence of another chronic debilitating disorder, were  $\geq 18$  years of age, free of medications that could impair autonomic tone, and were not taking fludrocortisone for at least 5 days prior to testing. Five of the 14 POTS subjects and 2 of the 10 “healthy controls” recalled a respiratory infection in the 6 months prior to onset of their symptoms or inclusion in the study for the healthy controls.

### Baseline Standing Challenges

The standing challenge was performed as previously described.<sup>19</sup> Heart rate, systolic BP (SBP), diastolic BP (DBP), and plasma catecholamines were measured after overnight rest (VU criteria) with the patient in the supine position and again after standing 10 (OU) to 30 (VU) minutes (as tolerated). Hemodynamic measures were assessed using an automated oscillometric monitor (Dinamap, Critikon Corp). For catecholamine measurements an indwelling cannula was inserted at least 20 minutes prior to starting the study.

### Sample Preparation

In Phase I, sera from OU subjects were purified to extract IgG (NAb Protein A/G Spin Kit, Pierce). This IgG was used to demonstrate that the effects were related to the autoantibodies and not to other serum components (eg, catecholamines). In Phase II, sera available for the VU subjects were not sufficient to extract IgG. Throughout the manuscript, we will use the term “serum” to describe these samples. Blood for catecholamines was collected and assayed as described.<sup>9</sup>

### $\beta$ 1AR and $\beta$ 2AR Assays

Serum-mediated  $\beta$ 1AR and  $\beta$ 2AR activation of cAMP production in transfected Chinese hamster ovary (CHO) cells (with either  $\beta$ 1AR or  $\beta$ 2AR stimulation) was measured using the cAMP Hunter eXpress GPCR Assay kit (DiscoverX, Fremont, CA) as described.<sup>12</sup> cAMP standard, negative (buffer), and positive (isoproterenol) controls were included in each assay. All samples were tested in triplicate. The cAMP values are expressed as percentage of buffer baseline to normalize the individual data.

### M3R Assay

IgG activation of M3R was measured in the OU samples using the PathHunter eXpress  $\beta$ -arrestin GPCR Assay kit (DiscoverX) as described.<sup>12</sup> Negative (buffer) and positive (acetylcholine) controls were included in each assay. The  $\beta$ -arrestin recruitment levels were expressed as a percentage of buffer baseline to normalize the individual data.

### Isolated Cremaster Arteriole Assay

The vasoconstrictor and vasodilator effect of the subjects' sera via GPCR activation on resistance vessels were examined using an isolated rat cremaster arteriole assay as described.<sup>12,20</sup> After equilibration and development of steady-state myogenic tone, the arterioles were perfused with the respective serum or IgG, and generally diluted 1:50

with Krebs's buffer. The dosage response curves demonstrated that this dilution provided optimal and consistent data. The specific  $\beta$ 2AR blocker ICI-118551 (5  $\mu$ mol/L) was then added to eliminate  $\beta$ 2AR-mediated vasodilation. The selective  $\alpha$ 1AR blocker prazosin (10  $\mu$ mol/L) was subsequently added to the perfusate to eliminate  $\alpha$ 1AR-mediated vasoconstriction, and the effects on vessel diameter were recorded. The buffer baseline diameters were normalized to 100% and subsequent sera/IgG-induced contractility was reported as a percentage change from baseline. This procedure was approved by the Oklahoma University Health Sciences Center Institutional Animal Care and Use Committee.

## Immunofluorescence Staining

$\beta$ 1AR/ $\beta$ 2AR-transfected CHO cells (DiscoverRx) and  $\alpha$ 1AR-transfected Chem-1 cells (Millipore) were cultured on glass cover slips in 6-well plates for 24 hours. The cells were fixed with 4% paraformaldehyde. After blocking, cells were incubated with healthy control sera, POTS sera (1:100) with and without preabsorption with an excess of the target ECL2 receptor peptide, or rabbit polyclonal antibodies to the respective receptors (positive controls) for 1 hour, followed by incubation with fluorescein isothiocyanate (FITC)-labeled anti-human or anti-rabbit IgG antibodies respectively (Jackson ImmunoResearch Laboratories). Nuclei were counterstained with 4',6-diamidino-2-phenylindole (DAPI). Fluorescence images were obtained using a fluorescence microscope (Olympus).

## Statistical Analysis

Data are expressed as mean $\pm$ SEM. Appropriateness of assumption of normal distributions for the continuous variables was confirmed by D'Agostino–Pearson omnibus normality test; consequently, paired and unpaired Student's *t* tests, as appropriate, were used for the comparison of continuous variables. Fisher's exact tests were used for dichotomous variables. Statistical significance was set at  $P<0.05$ .

## Results

### Clinical Data

Demographic data are included in Table. The POTS patients were older than the healthy control subjects (39 $\pm$ 13 years vs 27 $\pm$ 6 years,  $P=0.013$ ). This difference existed only from the older patients recruited at the OU VAMC. The POTS subjects from VU were not significantly different from the control subjects ( $P=0.38$ ). There was no significant difference in gender between the POTS and control groups (Fisher's exact test,  $P=0.21$ ). Five of the 14 POTS subjects reported some

**Table 1.** Demographics and Postural Signs and Catecholamines of the POTS and Healthy Control Subjects

	POTS n=14	Control n=10	P Value
Female, n (%)	10 (71)	4 (40)	0.21
Age, y	39 $\pm$ 13	27 $\pm$ 6	0.013
History of infection, n (%)	5 (36)	2 (20)	0.65
Supine			
Heart rate, min <sup>-1</sup>	76 $\pm$ 13	73 $\pm$ 13	
SBP, mm Hg	117 $\pm$ 14	119 $\pm$ 9	
DBP, mm Hg	76 $\pm$ 13	69 $\pm$ 10	
Norepinephrine, pg/mL*	215 $\pm$ 66	223 $\pm$ 159	
Epinephrine, pg/mL†	19 $\pm$ 13	18 $\pm$ 20	
Standing			
Heart rate, min <sup>-1</sup>	120 $\pm$ 22	81 $\pm$ 15	
SBP, mm Hg	123 $\pm$ 12	118 $\pm$ 13	
DBP, mm Hg	83 $\pm$ 13	75 $\pm$ 10	
Norepinephrine, pg/mL	873 $\pm$ 302	553 $\pm$ 263	
Epinephrine, pg/mL	58 $\pm$ 32	35 $\pm$ 31	
Change ( $\Delta$ ) from supine to standing			
Heart rate, min <sup>-1</sup>	44 $\pm$ 16	7 $\pm$ 5	<0.001
SBP, mm Hg	6 $\pm$ 7	1 $\pm$ 7	0.10
DBP, mm Hg	8 $\pm$ 12	5 $\pm$ 9	0.51
Norepinephrine, pg/mL	658 $\pm$ 296	330 $\pm$ 207	0.0065
Epinephrine, pg/mL	40 $\pm$ 21	17 $\pm$ 23	0.0185

Data are presented as mean $\pm$ SD. Comparisons between the POTS and control groups were performed using unpaired *t* test or Fisher's exact test. DBP indicates diastolic blood pressure; POTS, postural tachycardia syndrome; SBP, systolic blood pressure.

\*SI conversion factor: norepinephrine (pg/mL $\times$ 0.005911=nmol/L).

†Epinephrine (pg/mL $\times$ 5.458=pmol/L).

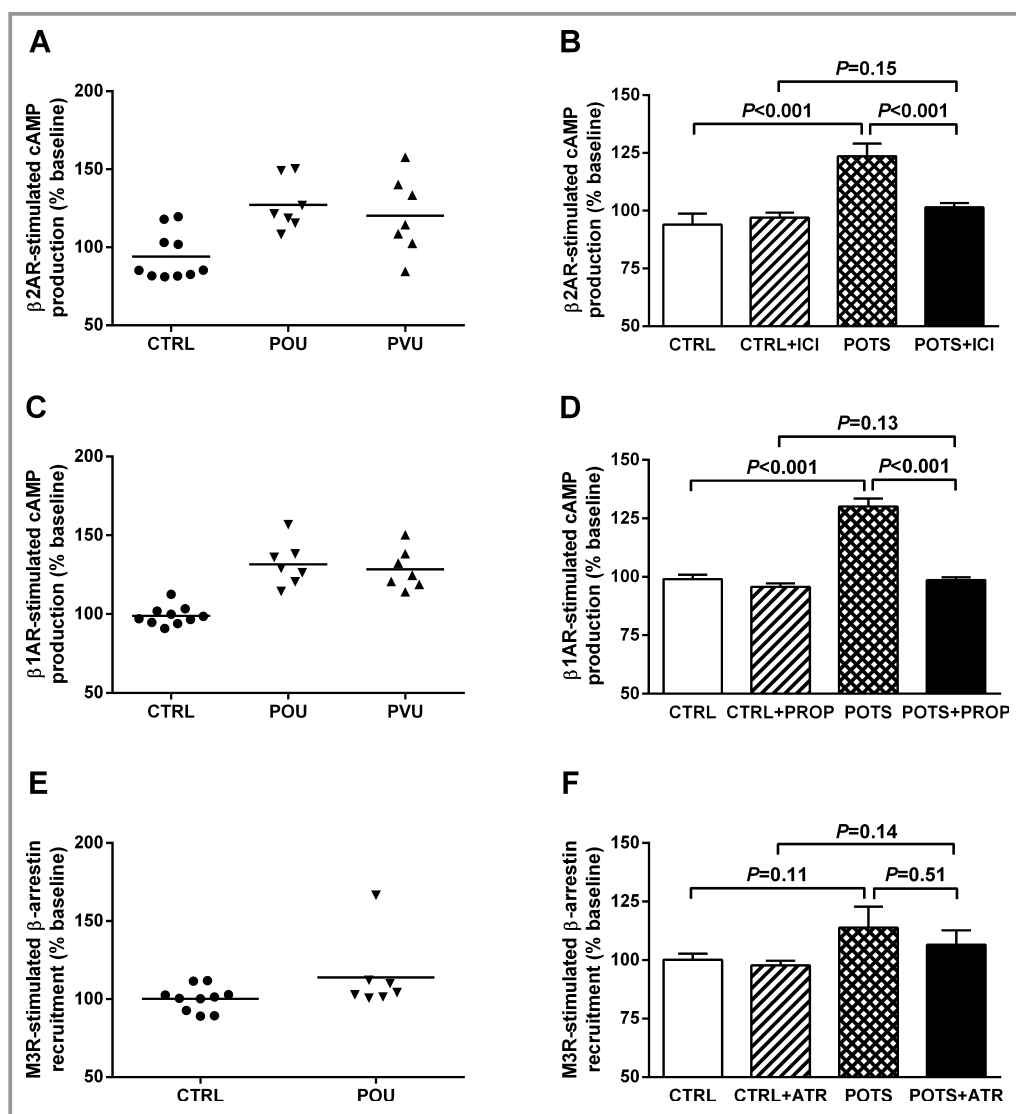
form of intercurrent viral-like illness in the 6 months preceding onset of their postural tachycardia-induced symptoms, while 2 of the 10 healthy controls recalled some form of infectious-related symptoms prior to their inclusion in the study (Fisher's exact test of association between POTS and viral-like illness,  $P=0.65$ ). The POTS patients had a significantly higher increase in heart rate with upright posture than healthy subjects ( $P<0.001$ ). The change in BP with upright posture was not significantly different between POTS patients and healthy subjects. Serum catecholamines were increased in POTS compared to their controls ( $P<0.05$ ).

### $\beta$ 1/2AR Activity

Since  $\beta$ 2AR vasodilatory activity, if present, would affect the cremaster vasoconstrictor bioassay, we first determined if any samples contained this autoantibody. The ability of the sera to stimulate cAMP in the  $\beta$ 2AR-transfected cells in each case

was expressed as a percentage of that observed for buffer alone. The activity in 4 of the 7 OU POTS subjects (Figure 1A) was higher than observed in the control subjects. Similarly, sera from 3 of 7 VU POTS patients had elevated  $\beta$ 2AR activity. The elevated  $\beta$ 2AR activity observed in POTS was significantly higher than the  $\beta$ 2AR activity observed in the control subjects ( $123 \pm 6\%$  vs  $94 \pm 5\%$  of baseline,  $P < 0.01$ ). This elevated

activity was eliminated following selective  $\beta$ 2AR blockade with ICI-118551 ( $101 \pm 2\%$  of baseline,  $P < 0.01$  vs POTS) and not significantly different from the control subjects ( $P = 0.2$ ) (Figure 1B). There was an increase in  $\beta$ 1AR-stimulated cAMP production in all of the POTS compared to the control subjects ( $130 \pm 3\%$  vs  $99 \pm 2\%$  of baseline,  $P < 0.001$ ) (Figure 1C and 1D); and this activity was blocked by the



**Figure 1.** Effects of serum/IgG from POTS patients and healthy control subjects on activation of  $\beta$ 2AR,  $\beta$ 1AR, and M3R in receptor-transfected CHO cells. Serum IgG (100  $\mu$ g/mL) from 7 OU POTS (POU), serum (1:50) from 7 VU POTS (PVU), and serum/IgG from 10 control (CTRL) subjects were measured for activation of cAMP in cultured CHO cells expressing  $\beta$ 2AR (A) or  $\beta$ 1AR (C). The cAMP values are expressed as a percentage of buffer baseline. Samples from each respective institution were run simultaneously to eliminate inter-assay variation. There was a significant increase in  $\beta$ 2AR (B) and  $\beta$ 1AR (D) activity in both POTS groups compared to control values. The addition of the specific  $\beta$ 2 blocker ICI-118551 (ICI) or  $\beta$ -blocker propranolol (PROP) during the incubation period significantly suppressed the values to control levels. IgG from the 7 OU POTS and 10 control subjects were also measured for M3R activation in cultured CHO cells expressing M3R (E). The M3R-mediated  $\beta$ -arrestin recruitment levels are expressed as a percentage of buffer baseline. These samples failed to demonstrate significant M3R activation (F). AR indicates adrenergic receptors; ATR, atropine; CHO, Chinese hamster ovary; OU, Oklahoma University; POTS, postural tachycardia syndrome; VU, Vanderbilt University.

nonselective  $\beta$ AR blocker propranolol ( $99 \pm 1\%$  of baseline,  $P < 0.001$  vs POTS) and not significantly different from the control subjects ( $P = 0.1$ ) (Figure 1D). Only 1 of 7 OU POTS subjects had an increase in M3R activity (Figure 1E) and there was no significant increase in this autoantibody (Figure 1F). There was a significant dose effect on activation of  $\beta$ 2AR for both sera and IgG from POTS subjects (Figures 2A and 2B). A similar dose effect on  $\beta$ 1AR activation for these samples was observed (Figures 2C and 2D).

### $\alpha$ 1AR Contractile Activity

Since  $\beta$ 2AR activity was present in a significant number of the POTS subjects, we analyzed the subject sera in the cremaster artery vasoconstriction bioassay in the presence of the selective  $\beta$ 2AR blocker ICI-118551. IgG from each of the 7 OU POTS patients (Figure 3A) and sera from the 7 VU POTS (Figure 3B) caused a  $>10\%$  decrease in the cremaster artery diameter when incubated with a standardized IgG concentration of  $100 \mu\text{g/mL}$  or 1:50 serum. Prazosin blocked this contractility almost completely in each group. There was a dosage-dependent vasoconstrictor effect for both IgG (Figure 3C) and sera (Figure 3D). Therefore, we combined the 2

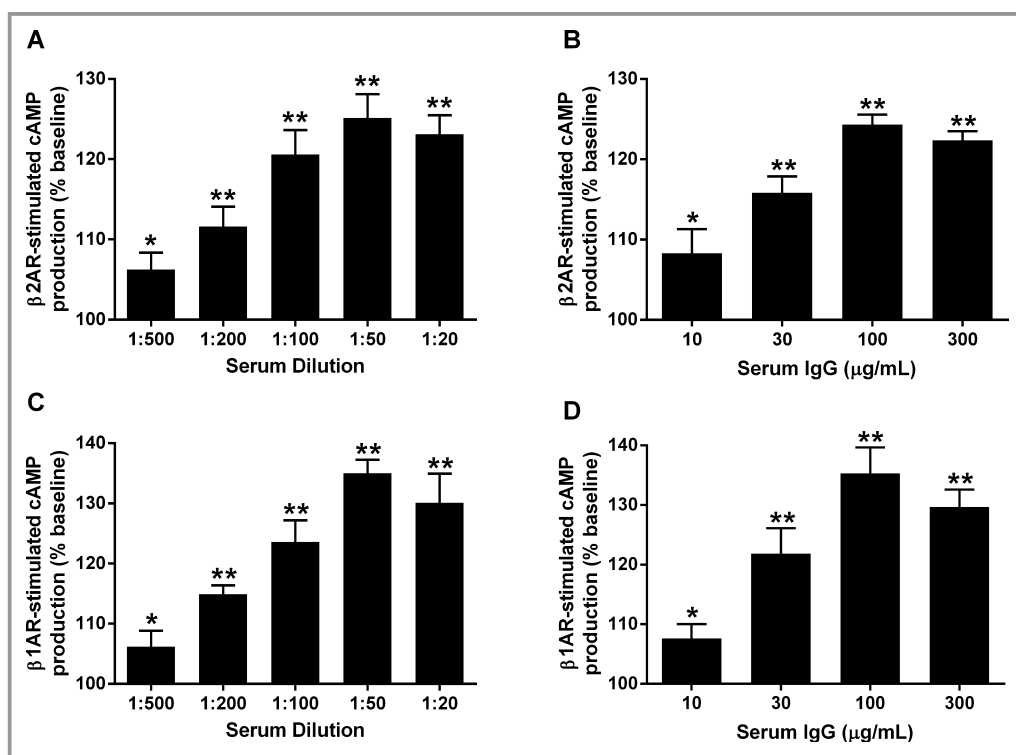
groups (Figure 4). The POTS subjects had a significant difference in contractility ( $76 \pm 3\%$  of baseline vs control  $94 \pm 1\%$ ,  $P < 0.001$ ) in the absence of  $\beta$ 2AR blockade with ICI-118551. When assayed in the presence of ICI-118551, the POTS had even greater contractility ( $69 \pm 3\%$  of baseline vs control  $91 \pm 1$ ,  $P < 0.001$ ), which was reversed by prazosin (Figure 4).

### Cremaster Artery Phenylephrine Dose Response

Phenylephrine was used to construct cremaster contractility  $\alpha$ 1AR dose response curves (Figure 5A). Sera from 3 POTS patients were used to examine the effect of the  $\alpha$ 1AR autoantibodies on phenylephrine-induced arteriolar contractility. In the presence of a 1:200 dilution of the POTS patient's serum, there was a significant shift of the curve to the right showing a decrease in the contractile response to phenylephrine. This was not observed using control sera.

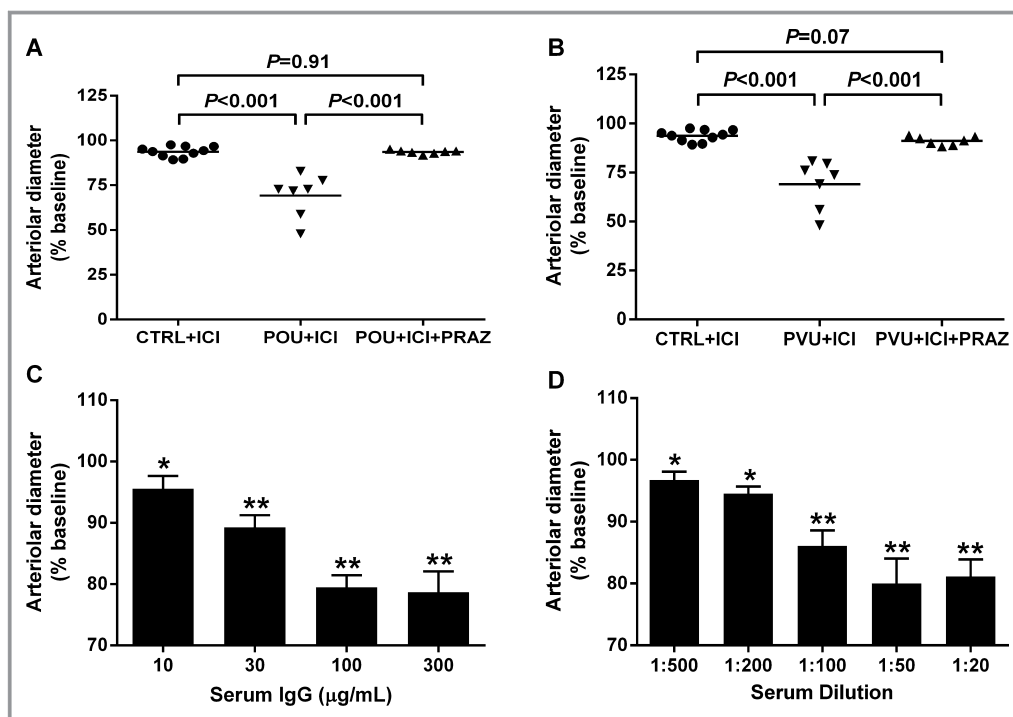
### Isoproterenol Dose Response

The impact of POTS sera on isoproterenol-induced  $\beta$ 2AR-mediated vasodilatation was examined using the cremaster

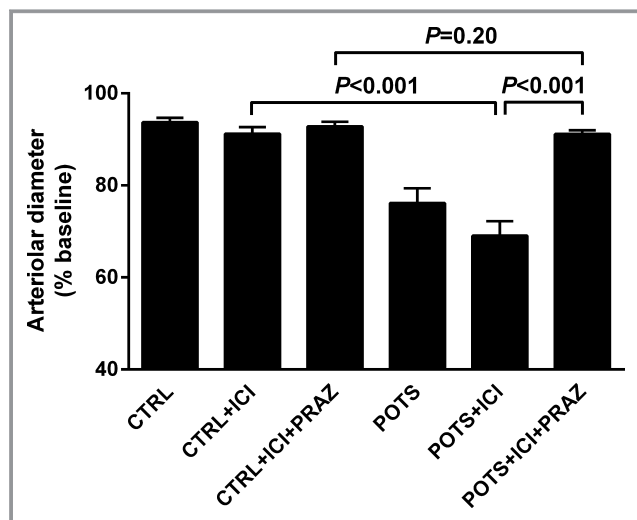


**Figure 2.** Dose effects of serum and IgG from 3 POTS patients on  $\beta$ 2AR and  $\beta$ 1AR activation of cAMP production in receptor-transfected CHO cells. Values are expressed as a percentage of buffer baseline. The serum (A and C) and IgG (B and D) demonstrated similar dosage effects. \* $P < 0.05$ , \*\* $P < 0.01$  vs buffer baseline. AR indicates adrenergic receptors; CHO, Chinese hamster ovary; POTS, postural tachycardia syndrome.





**Figure 3.** Effects of serum/IgG from POTS patients and healthy control subjects on basal spontaneous myogenic tone of rat cremaster arterioles. Values are expressed as % decrease in arteriolar diameter from baseline. IgG (100 μg/mL) from the 7 OU POTS patients (A) and serum (1:50) from the 7 VU POTS patients (B) caused significant vasoconstriction compared to serum/IgG from the 10 control subjects. This assay was performed after blocking β<sub>2</sub>AR activity by addition of ICI-118551 (5 μmol/L). The addition of the α<sub>1</sub>AR blocker prazosin (PRAZ, 10 μmol/L) markedly suppressed the contractility to control levels. There was a significant dosage-dependent vasoconstrictive effect for both IgG (C) and serum (D) from the POTS patients. \**P*<0.05, \*\**P*<0.01 vs baseline, *n*=3. AR indicates adrenergic receptors; OU, Oklahoma University; POTS, postural tachycardia syndrome; VU, Vanderbilt University.

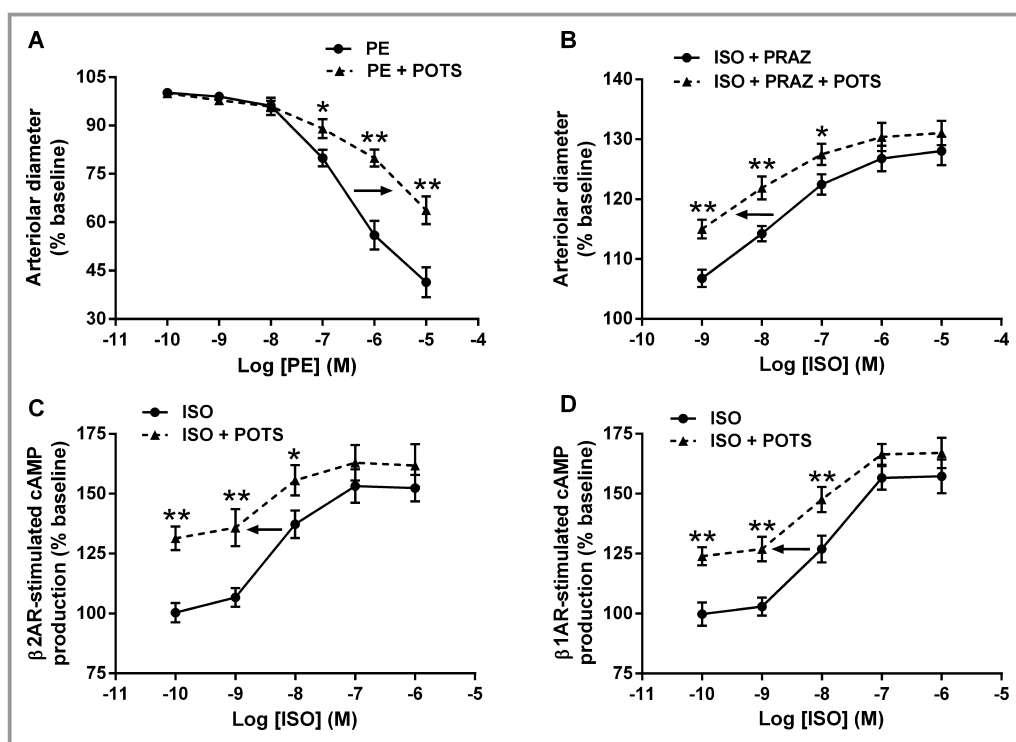


**Figure 4.** Vasoconstrictive effect for the combined POTS groups. The vasoconstriction for the combined POTS groups was significantly greater than in control subjects. This constriction was enhanced with withdrawal of β<sub>2</sub>AR-mediated vasodilatation with ICI-118551. Prazosin reversed this to baseline. No significant vasoconstriction was observed for the control subjects. POTS, postural tachycardia syndrome; PRAZ, prazosin.

artery contractility assay (Figure 5B). Contractility curve was shifted significantly to the left in the presence of POTS sera compared to control. The effect of POTS IgG was also examined using β<sub>2</sub>AR- and β<sub>1</sub>AR-transfected CHO cells. The POTS IgG-augmented cAMP production was shifted significantly to the left, demonstrating positive allosteric effects for both β<sub>2</sub>AR (Figure 5C) and β<sub>1</sub>AR (Figure 5D) with these autoantibodies.

### Immunofluorescence Staining

We used receptor-transfected cells to demonstrate specific autoantibody binding to the receptors. Sera from a POTS subject who demonstrated activating autoantibodies to β<sub>1</sub>AR, β<sub>2</sub>AR, and α<sub>1</sub>AR, sera from a healthy control subject and rabbit polyclonal antibodies to each receptor as positive controls were separately incubated with these cells without and with an excess of their respective ECL2 target peptide. These images are shown in Figure 6. There was significant binding to each of the receptors from the POTS sera, which was completely blocked by preabsorption with the specific ECL2 peptides. No significant binding to the cells from the control sera was observed.



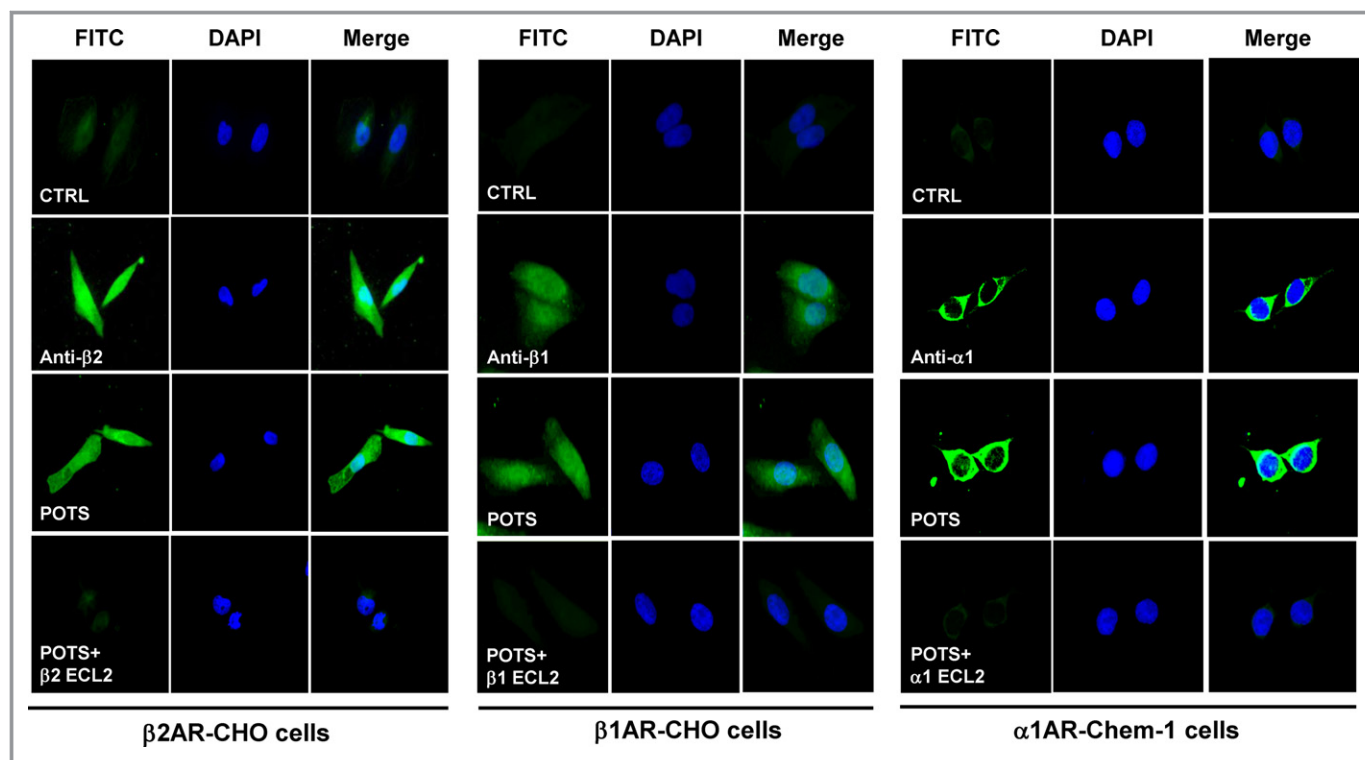
**Figure 5.** Allosteric effects of POTS serum/IgG on phenylephrine and isoproterenol dose response. A, Serum (1:200) from 3 POTS subjects with  $\alpha$ 1AR activating activity shifted the phenylephrine (PE) dosage response curve to the right in a cremaster vasoconstriction assay. Control serum failed to alter the curve. B, Serum (1:200) from 3 POTS subjects was incubated with prazosin (10  $\mu$ mol/L, to block coexisting  $\alpha$ 1AR pressor activity) and used to construct an isoproterenol (ISO) vasodilator response curve in the cremaster arteriole assay. In contrast to the  $\alpha$ 1AR autoantibody dosage response, the  $\beta$ 2AR activation curve was shifted significantly to the left compatible with a positive allosteric effect. C, Likewise, IgG (50  $\mu$ g/mL) from 3  $\beta$ 2AR antibody-positive POTS subjects significantly shifted to the left an isoproterenol activation curve of cAMP production in  $\beta$ 2AR-transfected CHO cells. D, IgG (50  $\mu$ g/mL) from 3 POTS subjects containing  $\beta$ 1AR autoantibodies produced a similar leftward shift of an isoproterenol activation curve in  $\beta$ 1AR-transfected CHO cells. \* $P$ <0.05, \*\* $P$ <0.01. AR indicates adrenergic receptors; CHO, Chinese hamster ovary; PRAZ, prazosin; POTS, postural tachycardia syndrome.

## Discussion

These data demonstrate that sera from POTS patients induce predominantly pressor responses blocked primarily by the  $\alpha$ 1AR-specific antagonist prazosin. These contractile responses were observed with sera/IgG from each of the POTS patients providing strong evidence that this effect was mediated by circulating autoantibodies to their respective target receptors and not from stray ligands in the sample (eg, norepinephrine). Specifically, autoantibodies directed toward the  $\alpha$ 1AR were responsible for the in vitro contractile effects on the cremaster resistance arterioles. These data were demonstrated in 2 separate cohorts, including one using blinded samples from a different center. These 2 groups, accumulated from different referral bases at separate institutions, had virtually indistinguishable immunological data. A significant difference in age was observed between the overall POTS and control groups despite considerable overlap. It is

unlikely this affected the interpretation of the data because the subject group from VU was not different in age from the controls. The autoantibody activity for both the OU and VU groups were identical despite the slight differences in mean age. Autoantibodies may express variable allosteric effects on GPCR, in some circumstances acting as agonists and in other circumstances as inverse agonists or as partial antagonists.<sup>16</sup> They may alter the effect of the orthosteric “natural” ligand on the receptor. The  $\alpha$ 1AR autoantibody-containing sera from POTS patients shifted the respective orthosteric ligand dosage response curve to the right. This provides support for the hypothesis that autoantibody-mediated  $\alpha$ 1AR partial antagonism is responsible for the POTS pathophysiology.

The observation that  $\beta$ 1AR-activating autoantibodies were present in all of the POTS subjects and  $\beta$ 2AR in one half of the subjects is important inasmuch as these autoantibodies significantly facilitated isoproterenol  $\beta$ 1AR and  $\beta$ 2AR activation of cellular cAMP production. These would enhance the



**Figure 6.** Immunofluorescence staining of  $\beta$ 2AR,  $\beta$ 1AR and  $\alpha$ 1AR in transfected cells with POTS serum. CHO cells expressing human  $\beta$ 2AR/ $\beta$ 1AR and Chem-1 cells expressing human  $\alpha$ 1AR were stained with POTS serum, rabbit polyclonal antibodies to  $\beta$ 2AR,  $\beta$ 1AR, or  $\alpha$ 1AR (positive control), or control serum and FITC (green)-labeled secondary antibodies. Nuclei were counterstained with DAPI (blue). Both POTS serum and the positive control antibodies demonstrated strong reactivity, while the control serum did not show any significant binding. POTS serum binding was abolished by preabsorption with the second extracellular loop (ECL2) peptide of the respective receptors. All images were obtained at  $\times 40$  magnification. AR indicates adrenergic receptors; DAPI, 4',6-diamidino-2-phenylindole; FITC, fluorescein isothiocyanate; POTS, postural tachycardia syndrome.

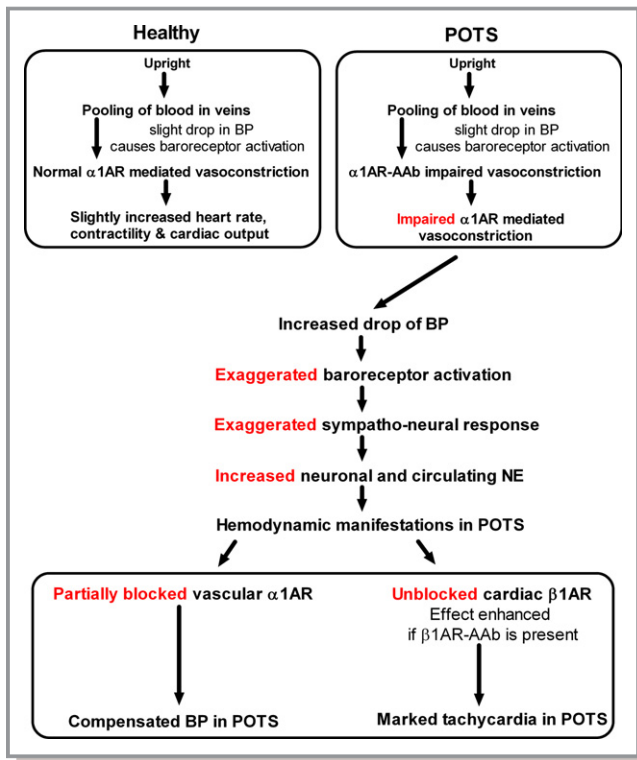
chronotropic effects of norepinephrine on the heart. Both  $\beta$ 2AR and M3R autoantibodies possess vasodilatory properties. It is likely the presence of  $\beta$ 2AR autoantibodies account for the initial borderline or blunted  $\alpha$ 1AR in vitro contractile responses observed in several POTS patients when initially studied without concurrent  $\beta$ 2AR blockade. Because the primary  $\alpha$ 1AR cremaster artery assay involves measurement of contractility, concomitant vasodilators can cause artifacts. Currently, there are no available activity assays for the  $\alpha$ 1AR such as were used for the  $\beta$ 1AR,  $\beta$ 2AR, and M3R. The variable co-presence of vasodilatory and vasoconstrictive autoantibodies supports a spectrum of autoantibody expression varying from idiopathic OH<sup>12,13</sup> to POTS, and likely includes patients with inappropriate sinus tachycardia.<sup>21</sup>

There is prior clinical evidence that receptor blockade is present in POTS patients. Circulating plasma norepinephrine levels can be elevated in POTS patients both while supine and upright. Circulating catecholamines however may not reflect the ligand changes at the receptor level. A mild resting tachycardia is frequently observed in POTS,<sup>9</sup> and an exaggerated heart rate is a hallmark. Increased venous pooling<sup>22,23</sup> and decreased plasma volume<sup>8</sup> are consistent with increased

norepinephrine effects.<sup>10,24</sup> Others have demonstrated defects in norepinephrine activity at the receptor level.<sup>25</sup> Wang et al recently reported 10 subjects with POTS demonstrated autoantibodies to proteins associated with lipid rafts purified from normal subjects.<sup>26</sup> These unidentified targets would include GPCR such as  $\alpha$ 1AR and  $\beta$ 1/2AR identified specifically in the present study. We have demonstrated by immunofluorescence that these autoantibodies bind to specific receptors and are inhibited by their respective ECL2 target peptides.

The cause(s) leading to autoantibody production in these subjects is currently unknown. Five of our 14 POTS subjects recalled some possible “infection” in the 6 months prior to their symptoms. However 2 of our 10 control subjects recalled similar “infections” and so these can only be considered anecdotal at this point. Li et al demonstrated that molecular mimicry could account for the presence of autoantibodies to the  $\beta$ 1AR in rats immunized with cardiac myosin.<sup>27</sup> Since the ECL of these receptors are in the ectodomain, it is conceivable that enzymatic activity, oxidative activity or a viral element might cause them to be shed and enter the circulation as a peptide that would subsequently be incorrectly processed as a “foreign” peptide. These origins at





**Figure 7.** Diagram depicting the proposed effects of activating autoantibodies (AAb) on the pathophysiology of POTS. These conclusions are supported by data demonstrating the consistent presence of autoantibodies to the  $\alpha$ 1AR, the  $\beta$ 1AR, and variably the  $\beta$ 2AR. The differing allosteric impact on their respective receptors will lead to an exaggerated tachycardia characteristic of this common syndrome. AR indicates adrenergic receptors; BP, blood pressure; NE, norepinephrine; POTS, postural tachycardia syndrome.

present must be considered speculative and worthy of future investigation.

As depicted in Figure 7, in the presence of the  $\alpha$ 1AR autoantibodies, the normal  $\alpha$ 1AR response to upright posture would be blunted at the level of the peripheral vascular receptor. An inadequate homeostatic BP response to upright posture is sensed by the baroreceptors leading to a heightened sympathetic nervous system outflow. This exaggerated response would lead to increased norepinephrine release at the sympathetic nerve ending and at the systemic level. This would lead to a normalization of the BP with orthostasis. However the cardiac effect of the sympathetic activation would be a direct and relatively unopposed chronotropic action on the  $\beta$ 1AR in the sinus node.  $\beta$ 1AR-activating autoantibodies were present in all of the POTS and these autoantibodies facilitated  $\beta$ 1AR agonist activation of cAMP in vitro. The variable presence of  $\beta$ 2AR autoantibodies would also contribute to this allosteric enhancement of cardiac  $\beta$ AR responsiveness to its natural ligand norepinephrine and would be expected to exaggerate the tachycardia.<sup>28</sup> It is likely this facilitation of endogenous  $\beta$ 1AR and  $\beta$ 2AR ligand activity may

produce adverse significant ramifications in other diseases such as cardiomyopathies that co-harbor and/or express these autoantibodies.

In conclusion, these data support the addition of POTS to a growing number of cardiovascular entities with an autoimmune pathophysiology. A pharmacological approach to management would ideally block autoantibody activity and leave the receptors unblocked. While this might be feasible with development of specific epitope decoy targets, the use of currently available agents is complicated by their impact on the specific receptor(s) needed for a normal response to orthostasis.

## Sources of Funding

This study was supported in part by funding from NIH grant R01 HL056267 (Cunningham, Kem), R01 HL102387 (Raj), U54 NS065736, UL1 TR000445 (Vanderbilt CTSA), VA Merit Review grant (Kem, Yu), American Heart Association Postdoctoral Fellowship (Li), Talley Research Award of the Harold Hamm Diabetes Center at the University of Oklahoma (Yu), Heart Rhythm Institute, OUHSC, and individual grant support from Will and Helen Webster. Liles was supported by the Oklahoma NARCH Student Development Program funded by NIH grant GM092238/U26IHS300412 through the Oklahoma Native American Research Centers for Health (ONARCH VI).

## Disclosures

None.

## References

1. Raj SR. Postural tachycardia syndrome (pots). *Circulation*. 2013;127:2336–2342.
2. Schondorf R, Low PA. Idiopathic postural orthostatic tachycardia syndrome: an attenuated form of acute pandysautonomia? *Neurology*. 1993;43:132–137.
3. Grubb BP. Postural tachycardia syndrome. *Circulation*. 2008;117:2814–2817.
4. Stewart JM. Postural tachycardia syndrome and reflex syncope: similarities and differences. *J Pediatr*. 2009;154:481–485.
5. Robertson D. The epidemic of orthostatic tachycardia and orthostatic intolerance. *Am J Med Sci*. 1999;317:75–77.
6. Raj SR. The postural tachycardia syndrome (pots): pathophysiology, diagnosis & management. *Indian Pacing Electrophysiol J*. 2006;6:84–99.
7. Freeman R, Wieling W, Axelrod FB, Benditt DG, Benarroch E, Biaggioni I, Cheshire WP, Chelmsky T, Cortelli P, Gibbons CH, Goldstein DS, Hainsworth R, Hilz MJ, Jacob G, Kaufmann H, Jordan J, Lipsitz LA, Levine BD, Low PA, Mathias C, Raj SR, Robertson D, Sandroni P, Schatz I, Schondorff R, Stewart JM, van Dijk JG. Consensus statement on the definition of orthostatic hypotension, neurally mediated syncope and the postural tachycardia syndrome. *Clin Auton Res*. 2011;21:69–72.
8. Raj SR, Biaggioni I, Yamhure PC, Black BK, Paranjape SY, Byrne DW, Robertson D. Renin-aldosterone paradox and perturbed blood volume regulation underlying postural tachycardia syndrome. *Circulation*. 2005;111:1574–1582.
9. Garland EM, Raj SR, Black BK, Harris PA, Robertson D. The hemodynamic and neurohumoral phenotype of postural tachycardia syndrome. *Neurology*. 2007;69:790–798.
10. Goldstein DS, Holmes C, Frank SM, Dendi R, Cannon RO III, Sharabi Y, Esler MD, Eisenhofer G. Cardiac sympathetic dysautonomia in chronic orthostatic intolerance syndromes. *Circulation*. 2002;106:2358–2365.

11. Fu Q, Vangundy TB, Shibata S, Auchus RJ, Williams GH, Levine BD. Exercise training versus propranolol in the treatment of the postural orthostatic tachycardia syndrome. *Hypertension*. 2011;58:167–175.
12. Li H, Kem DC, Reim S, Khan M, Vanderlinde-Wood M, Zillner C, Collier D, Liles C, Hill MA, Cunningham MW, Aston CE, Yu X. Agonistic autoantibodies as vasodilators in orthostatic hypotension: a new mechanism. *Hypertension*. 2012;59:402–408.
13. Yu X, Stavrakis S, Hill MA, Huang S, Reim S, Li H, Khan M, Hamlett S, Cunningham MW, Kem DC. Autoantibody activation of beta-adrenergic and muscarinic receptors contributes to an “autoimmune” orthostatic hypotension. *J Am Soc Hypertens*. 2012;6:40–47.
14. Wallukat G, Nissen E, Morwinski R, Muller J. Autoantibodies against the beta- and muscarinic receptors in cardiomyopathy. *Herz*. 2000;25:261–266.
15. Nikolaev VO, Boivin V, Stork S, Angermann CE, Ertl G, Lohse MJ, Jahns R. A novel fluorescence method for the rapid detection of functional beta1-adrenergic receptor autoantibodies in heart failure. *J Am Coll Cardiol*. 2007;50:423–431.
16. Herda LR, Felix SB, Boege F. Drug-like actions of autoantibodies against receptors of the autonomous nervous system and their impact on human heart function. *Br J Pharmacol*. 2012;166:847–857.
17. Nwazue VC, Raj SR. Confounders of vasovagal syncope: postural tachycardia syndrome. *Cardiol Clin*. 2013;31:101–109.
18. Coffin ST, Black BK, Biaggioni I, Paranjape SY, Orozco C, Black PW, Dupont WD, Robertson D, Raj SR. Desmopressin acutely decreases tachycardia and improves symptoms in the postural tachycardia syndrome. *Heart Rhythm*. 2012;9:1484–1490.
19. Plash WB, Diedrich A, Biaggioni I, Garland EM, Paranjape SY, Black BK, Dupont WD, Raj SR. Diagnosing postural tachycardia syndrome: comparison of tilt testing compared with standing haemodynamics. *Clin Sci (Lond)*. 2013;124:109–114.
20. Hill MA, Zou H, Davis MJ, Potocnik SJ, Price S. Transient increases in diameter and  $[Ca^{2+}]_i$  are not obligatory for myogenic constriction. *Am J Physiol Heart Circ Physiol*. 2000;278:H345–H352.
21. Olshansky B, Sullivan RM. Inappropriate sinus tachycardia. *J Am Coll Cardiol*. 2013;61:793–801.
22. Streeten DH, Anderson GH Jr, Richardson R, Thomas FD. Abnormal orthostatic changes in blood pressure and heart rate in subjects with intact sympathetic nervous function: evidence for excessive venous pooling. *J Lab Clin Med*. 1988;111:326–335.
23. Stewart JM. Pooling in chronic orthostatic intolerance: arterial vasoconstrictive but not venous compliance defects. *Circulation*. 2002;105:2274–2281.
24. Jordan J, Shannon JR, Diedrich A, Black BK, Robertson D. Increased sympathetic activation in idiopathic orthostatic intolerance: role of systemic adrenoceptor sensitivity. *Hypertension*. 2002;39:173–178.
25. Shannon JR, Flattem NL, Jordan J, Jacob G, Black BK, Biaggioni I, Blakely RD, Robertson D. Orthostatic intolerance and tachycardia associated with norepinephrine-transporter deficiency. *N Engl J Med*. 2000;342:541–549.
26. Wang XL, Ling TY, Charlesworth MC, Figueroa JJ, Low P, Shen WK, Lee HC. Autoimmunoreactive IgGs against cardiac lipid raft-associated proteins in patients with postural orthostatic tachycardia syndrome. *Transl Res*. 2013;162:34–44.
27. Li Y, Heuser JS, Cunningham LC, Kosanke SD, Cunningham MW. Mimicry and antibody-mediated cell signaling in autoimmune myocarditis. *J Immunol*. 2006;177:8234–8240.
28. Chiale PA, Garro HA, Schmidberg J, Sanchez RA, Acunzo RS, Lago M, Levy G, Levin M. Inappropriate sinus tachycardia may be related to an immunologic disorder involving cardiac beta adrenergic receptors. *Heart Rhythm*. 2006;3:1182–1186.

## Autoimmune Basis for Postural Tachycardia Syndrome

Hongliang Li, Xichun Yu, Campbell Liles, Muneer Khan, Megan Vanderlinde-Wood, Allison Galloway, Caitlin Zillner, Alexandria Benbrook, Sean Reim, Daniel Collier, Michael A. Hill, Satish R. Raj, Luis E. Okamoto, Madeleine W. Cunningham, Christopher E. Aston and David C. Kem

*J Am Heart Assoc.* 2014;3:e000755; originally published February 26, 2014;

doi: 10.1161/JAHA.113.000755

The *Journal of the American Heart Association* is published by the American Heart Association, 7272 Greenville Avenue, Dallas, TX 75231  
Online ISSN: 2047-9980

The online version of this article, along with updated information and services, is located on the World Wide Web at:

<http://jaha.ahajournals.org/content/3/1/e000755>