

01/14/2014 4:46:16

SINUS RHYTHM

rSr' pattern in V1 or V2

PROBABLE NORMAL VARIANT

Poor R wave progression V2-V4

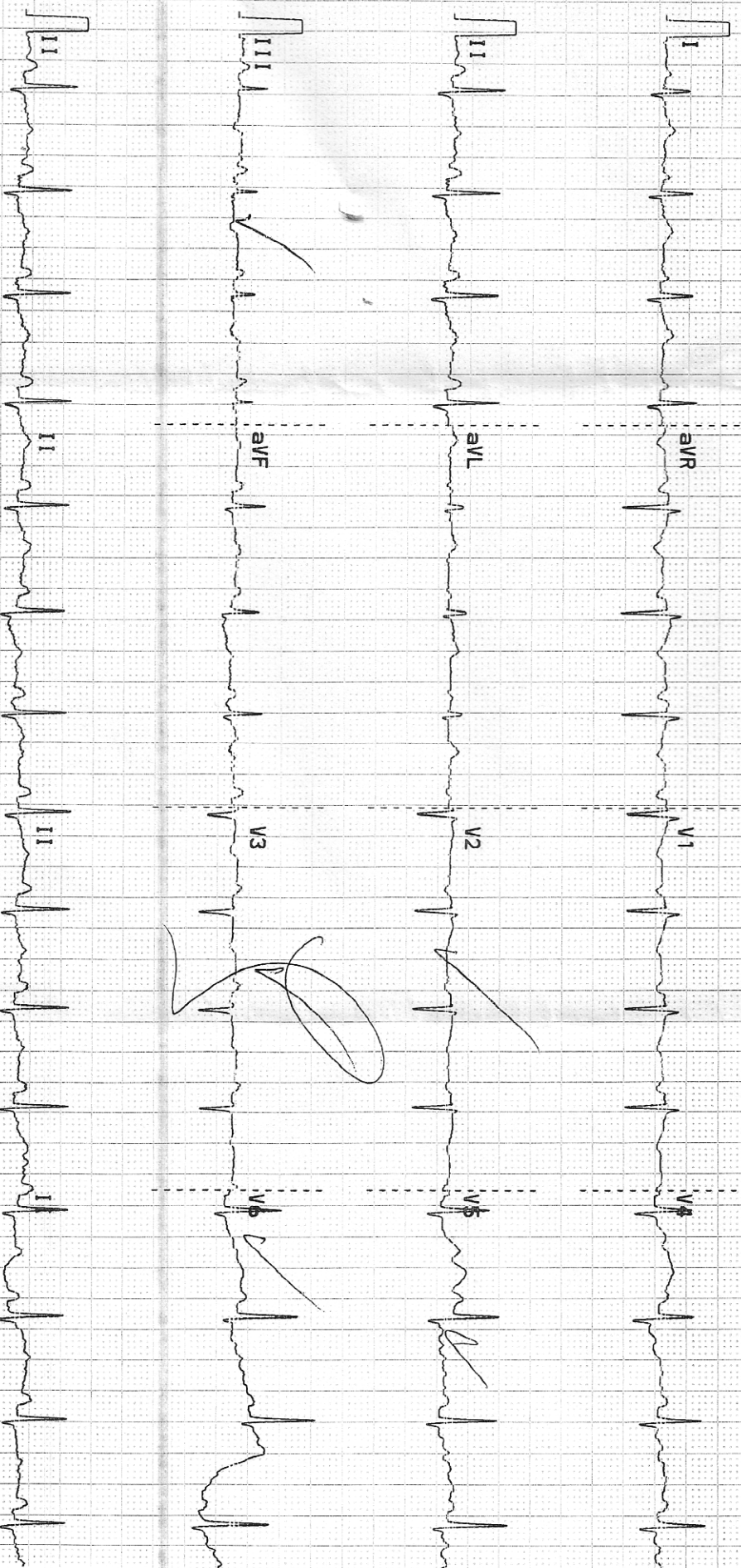
T wave inversion also present

CHANGES ARE PROBABLY DUE TO LVH BUT CONSIDER ANTERIOR INFARCT

Summary: ABNORMAL ECG

* Unconfirmed Analysis *

Vent. Rate:	90 bpm
RR Interval:	666 ms
PR Interval:	142 ms
QRS Duration:	76 ms
QT Interval:	348 ms
QTc Interval:	400 ms
QT Dispersion:	60 ms
P-R-T AXIS:	66° 64° 22°



L: 1 m/mV
C: 10 mm/mV

QTc=Hodges

Altra 3000 INT. REV. 2/2005 (2005-10000)

Serial # 92200-302654

~ STABLE 40 Hz